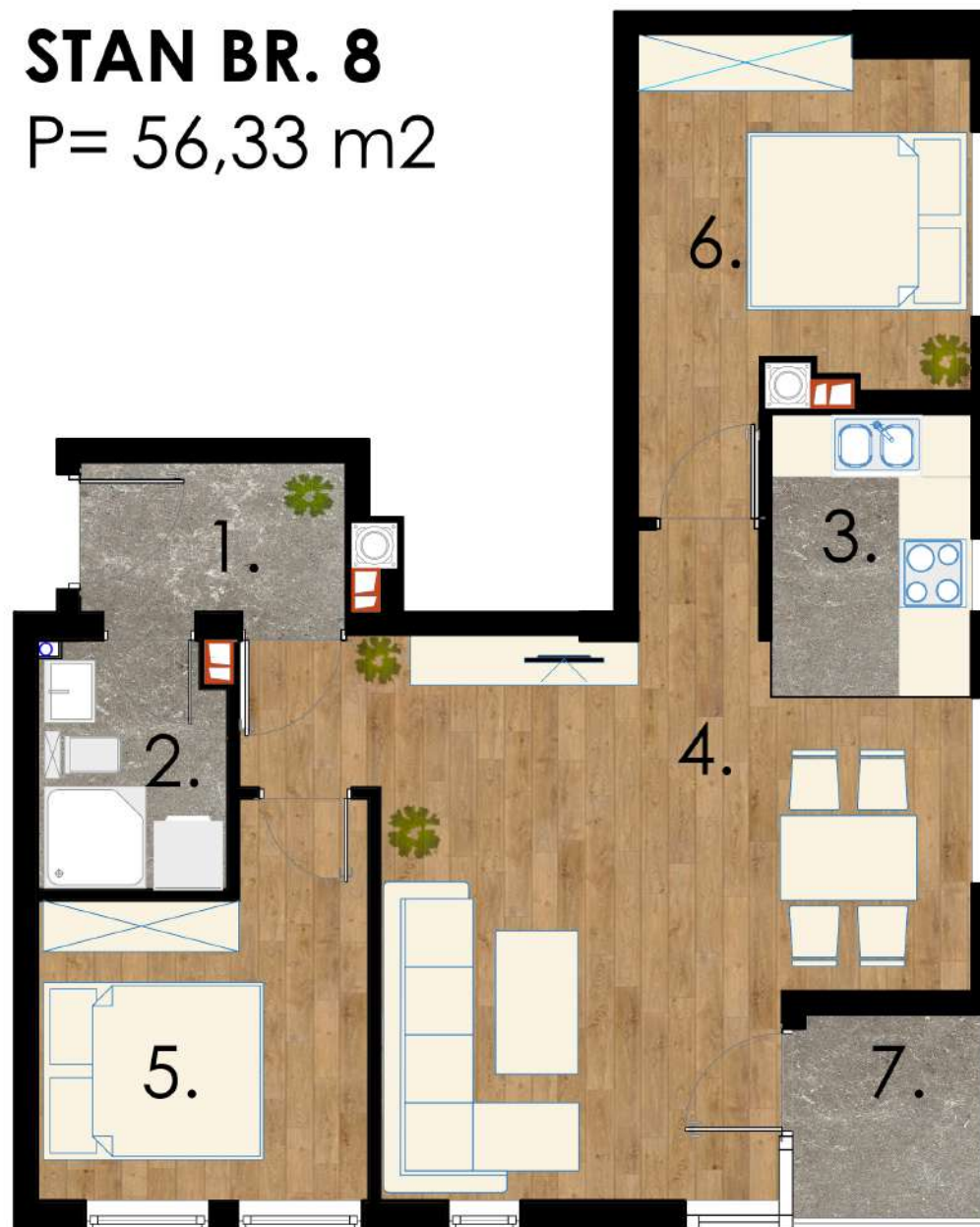
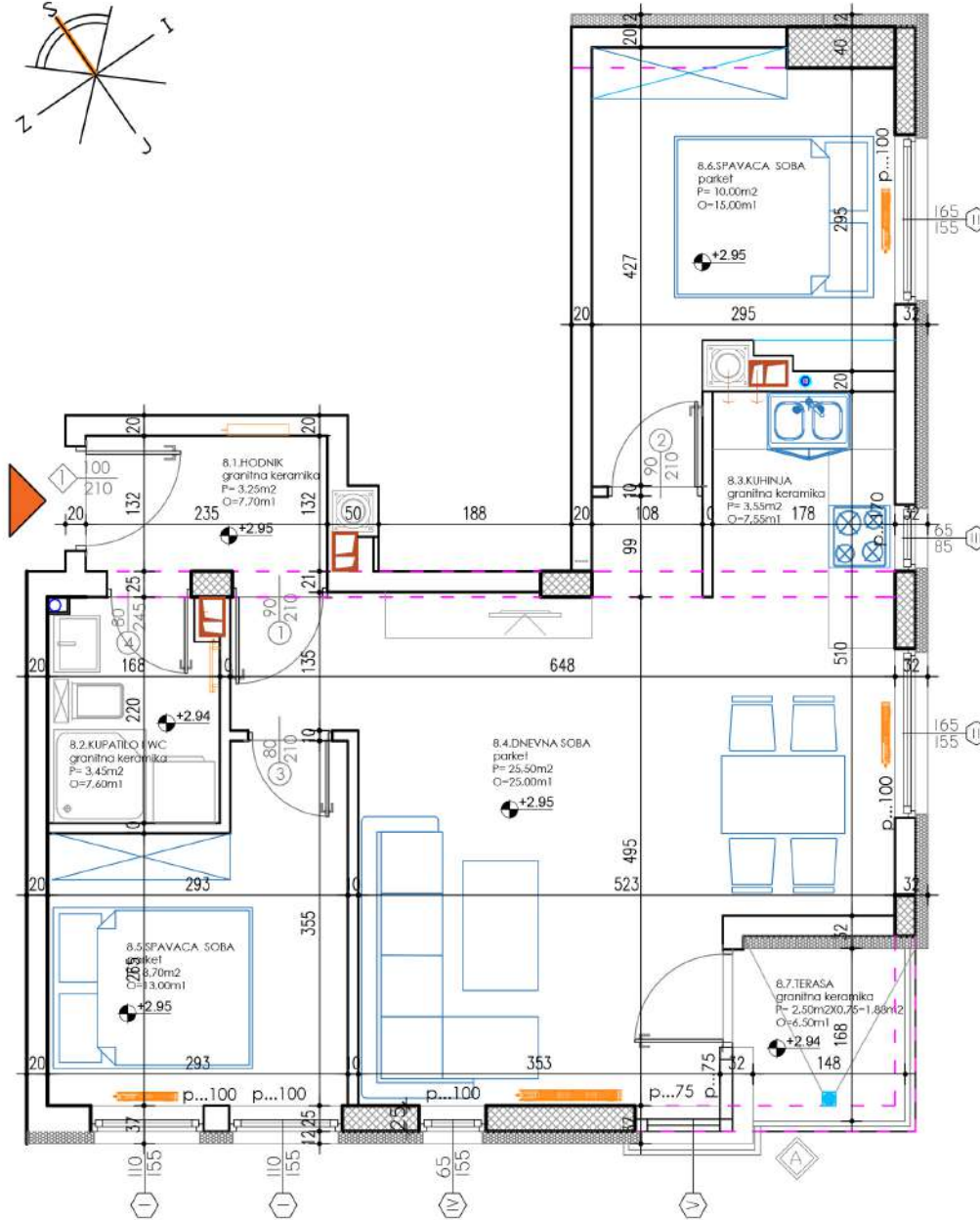
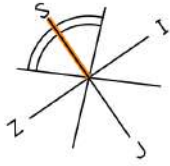


# STAN BR. 8

P= 56,33 m<sup>2</sup>





## STAN 8

1.	HODNIK	3,25 m <sup>2</sup>
2.	KUPATILO	3,45 m <sup>2</sup>
3.	KUHINJA	3,55 m <sup>2</sup>
4.	DNEVNA SOBA	25,50 m <sup>2</sup>
5.	SPAVAĆA SOBA	8,70 m <sup>2</sup>
6.	SPAVAĆA SOBA	10,00 m <sup>2</sup>
7.	TERASA	1,88 m <sup>2</sup>
<b>UKUPNO</b>		<b>56,33 m<sup>2</sup></b>

