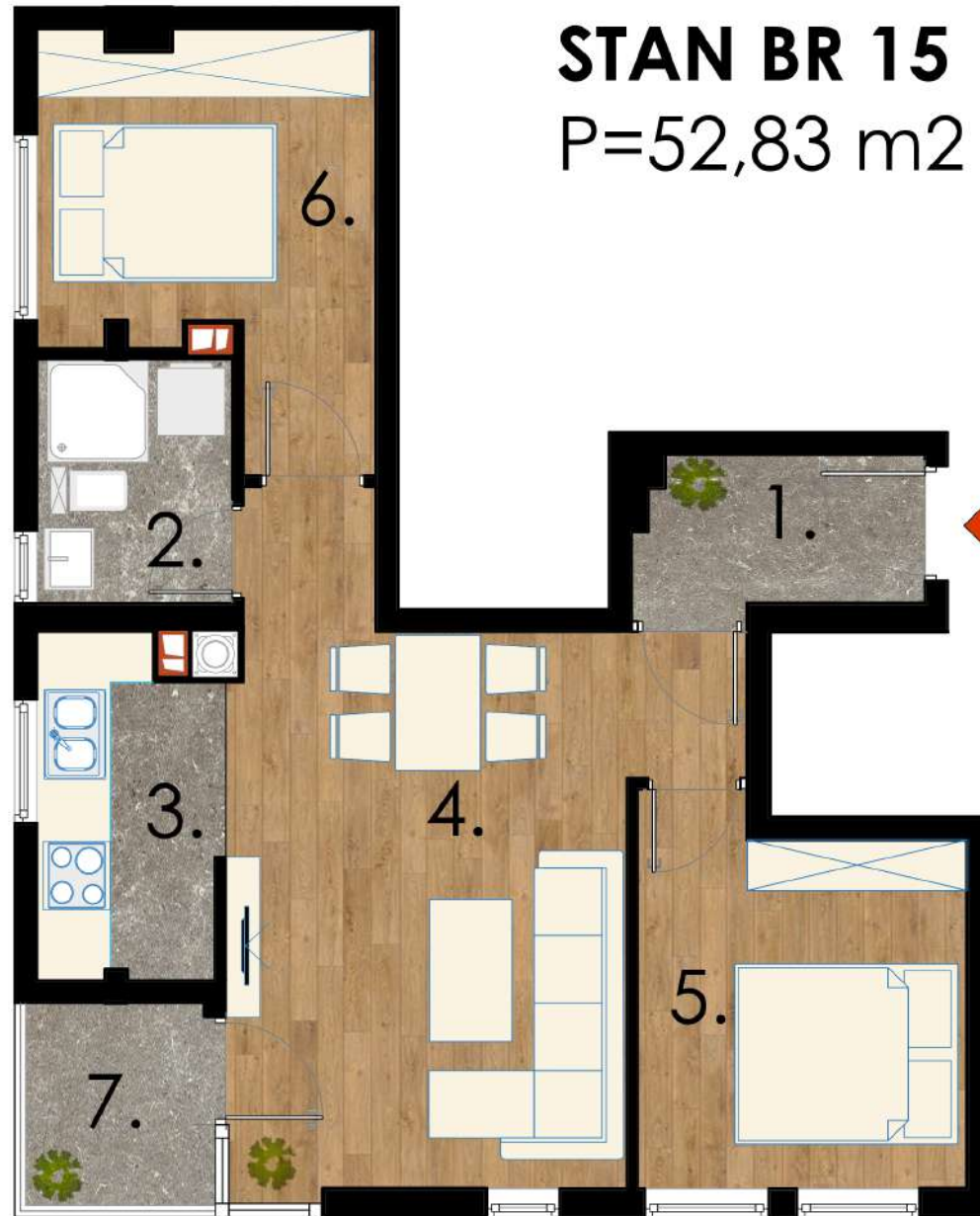
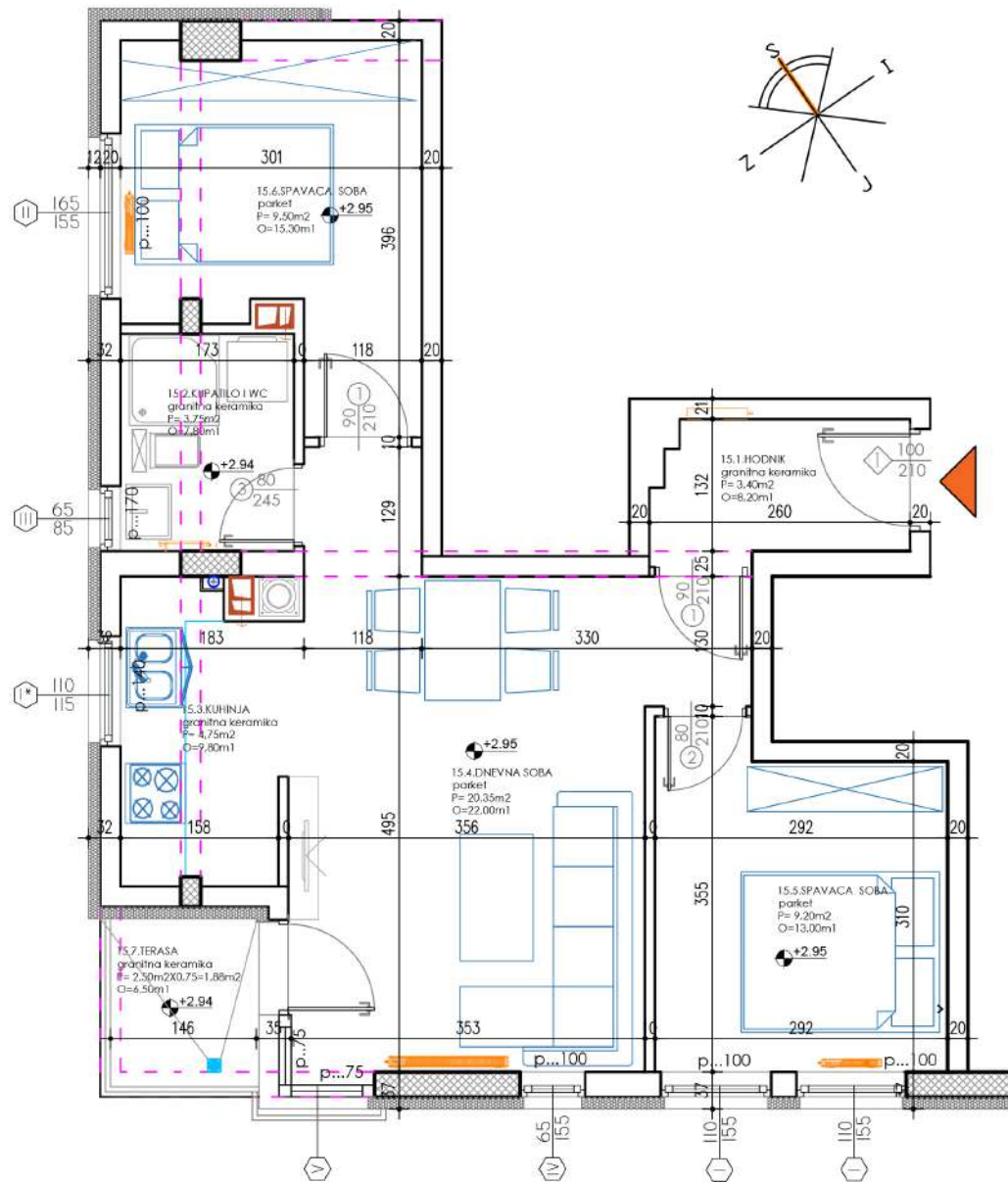


STAN BR 15

P=52,83 m²





STAN 15

1.	HODNIK	3,40 m ²
2.	KUPATILO	3,75 m ²
3.	KUHINJA	4,75 m ²
4.	DNEVNA SOBA	20,35 m ²
5.	SPAVAĆA SOBA	9,20 m ²
6.	SPAVAĆA SOBA	9,50 m ²
7.	TERASA	1,88 m ²
UKUPNO		52,83 m²





