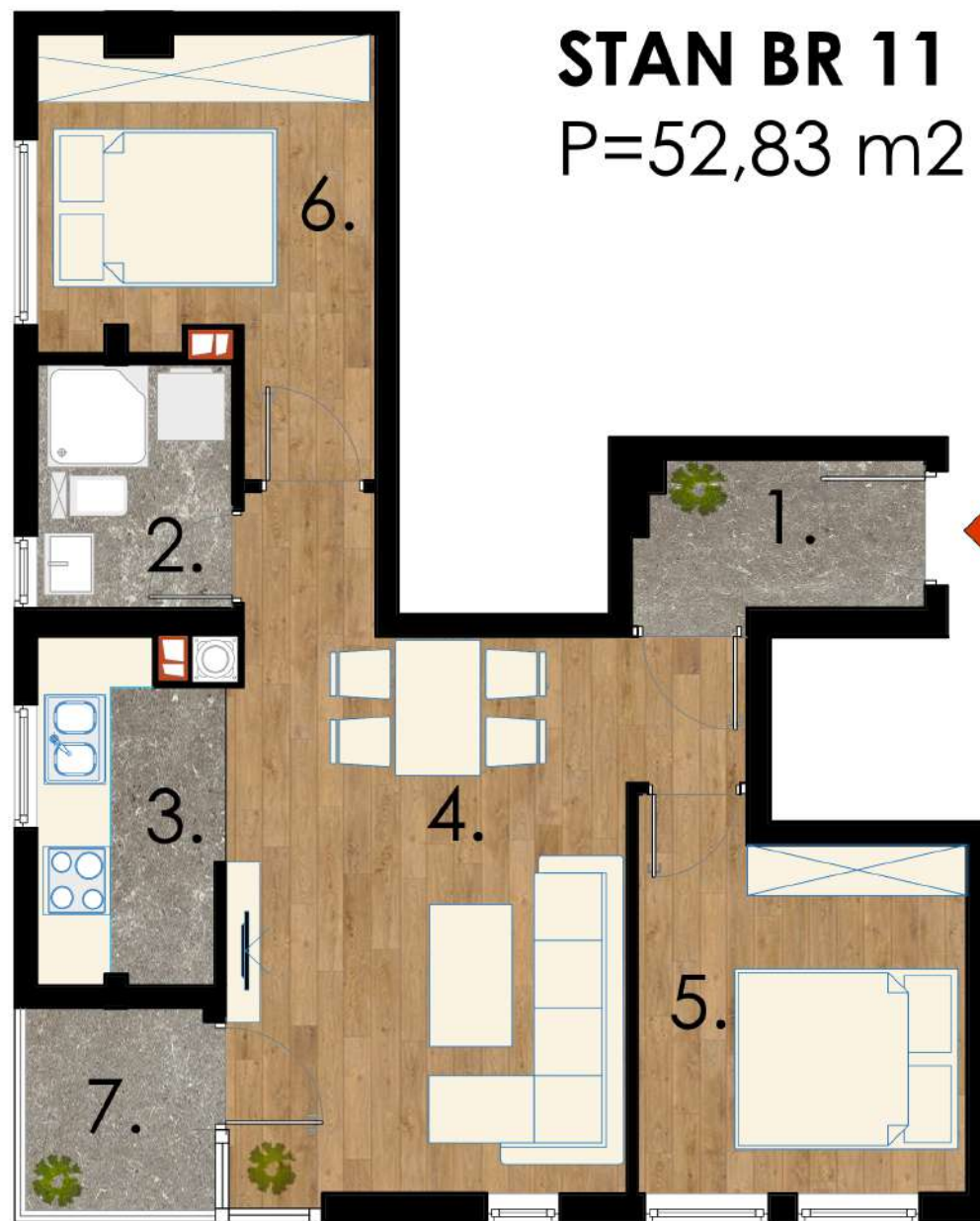
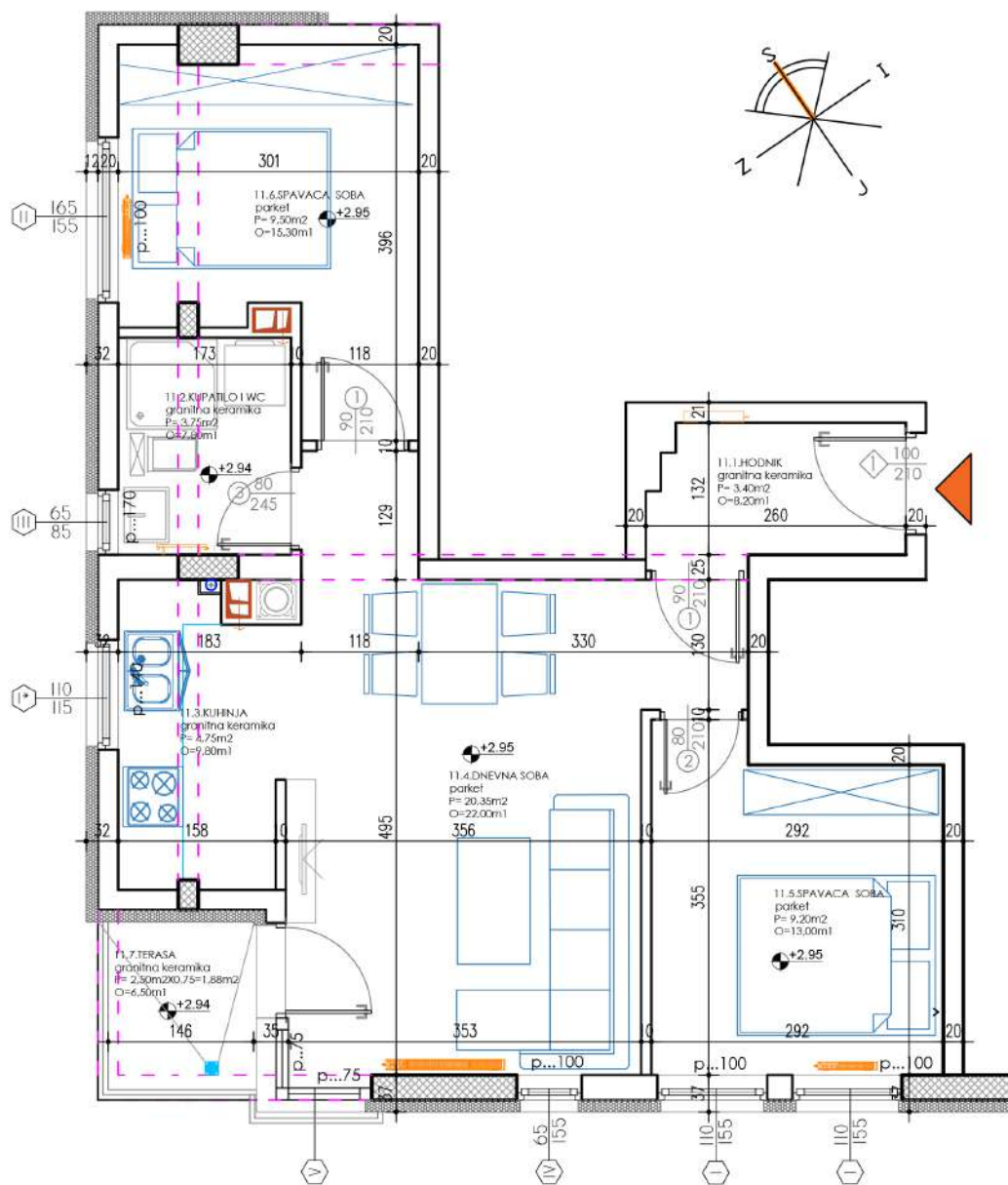


# STAN BR 11

P=52,83 m<sup>2</sup>





## STAN 11

1.	HODNIK	3,40 m <sup>2</sup>
2.	KUPATILO	3,75 m <sup>2</sup>
3.	KUHINJA	4,75 m <sup>2</sup>
4.	DNEVNA SOBA	20,35 m <sup>2</sup>
5.	SPAVAĆA SOBA	9,20 m <sup>2</sup>
6.	SPAVAĆA SOBA	9,50 m <sup>2</sup>
7.	TERASA	1,88 m <sup>2</sup>
<b>UKUPNO</b>		<b>52,83 m<sup>2</sup></b>





